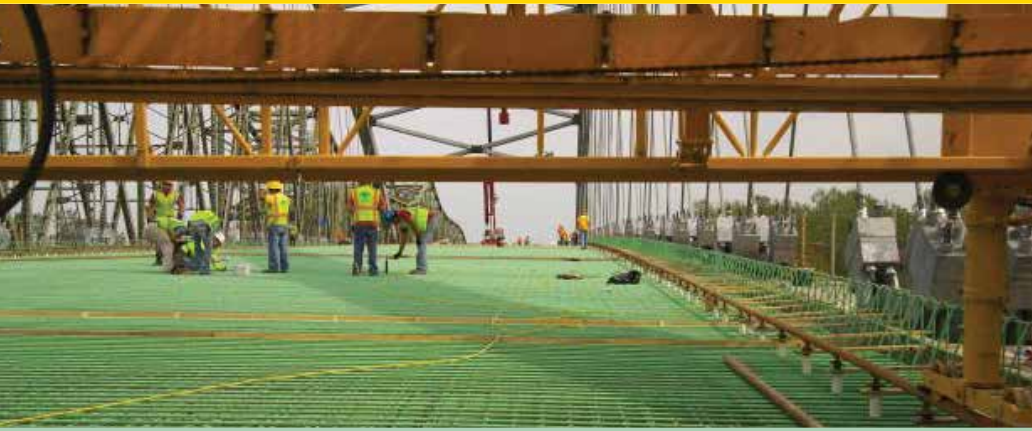


# Amelia Earhart Memorial Bridge

Atchison, KS / Winthrop, MO



The Amelia Earhart Memorial Bridge spans 2,500 feet over the Missouri River between Atchison, KS and Winthrop, MO, on U.S. 59. The bridge is distinguished by double steel arches and special aesthetic lighting. Construction began in July 2009 and two lanes opened in December 2012. All four lanes were open in June 2013.

Designed for a 100-year design life, it handles twice the capacity of the former bridge for U.S. 59 crossing the Missouri River.

Girders for the bridge were NU2000 type girders with span lengths of 120 feet to 135 feet. Each girder was reinforced with 0.6 inch diameter 270 ksi low relaxation prestressing strand and grade 60 epoxy-coated stirrups.

## Team

**Owner:**

Kansas Department of Transportation and Missouri Department of Transportation.

**Engineer:**

HNTB

**General Contractor:**

Archer Western

**Design Criteria:**

- Provide new crossing over the Missouri River.
- 100-year design life.

**Total Project Cost:** \$54 million

**Photography:**

MoDOT NW

[acikansas.org](http://acikansas.org)



## Epoxy-Coated Reinforcing Steel

# **COST-EFFECTIVE CORROSION PROTECTION**

*A Better Product Using More Than 40 Years of Improved Manufacturing and Coating Technologies.*