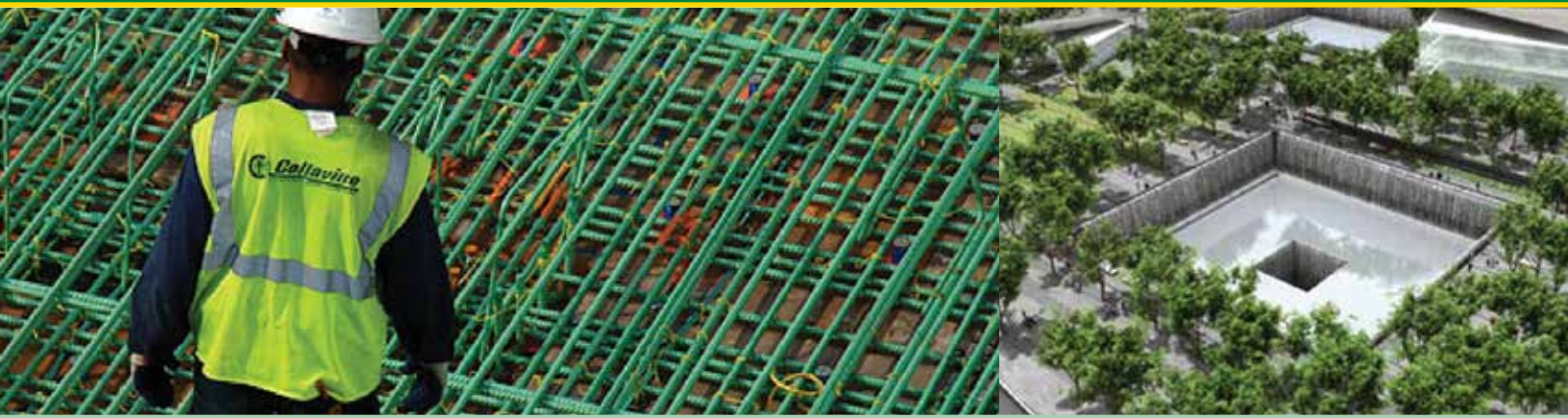


# World Trade Center Memorial

New York City, NY



An International Design Competition was held in 2003 for selecting the design for a national memorial to remember and honor the people killed in terrorist attacks of September 11, 2001 and February 26, 1993. Design submissions totaled 5,201 and were received from 63 nations.

On the site of the former World Trade Center a memorial has been constructed, commemorating those lives lost on September 11, 2001. The memorial consists of two reflecting pools, intended to fill out the "footprint" of the towers, each being equal to the exact perimeter of the North and South Tower, respectively.

More than 400 trees are planned for the plaza, surrounding the Memorial's two massive reflecting pools. Its design conveys a spirit of hope and renewal, and creates a contemplative space separate from the usual sights and sounds of a bustling metropolis.

Swamp white oak trees provide a canopy of leaves over the plaza. A small clearing in the grove, known as the Memorial Glade, designates a space for gatherings and special ceremonies.

With its grove of trees, the Memorial's plaza is an actual green roof for the structure housing the 9/11 Memorial Museum, a train station and other facilities 70 feet below street level. Epoxy-coated reinforcing steel (rebar) was used because of its corrosion protection.

## Team

**Owner:**

Port Authority of New York and New Jersey

**Architect:**

Michael Arad

**Architect or Record:**

Handel Architects

**General Contractor:**

Bovis Lend Lease

**Design Criteria:**

- Provide an appropriate area to commemorate the loss of lives on 9/11.
- Utilize sustainable design principles.
- Select trees with a region surrounding New York, reflecting lives lost.

**Total Project Cost:** \$22 million

**Photography:**

The New York Times